

2025

Endangered SPECIES

Incredible world environments and their precious endemic wildlife



JAGUAR
PANTANAL, BRAZIL

Recognised by its bold rosetted tawny coat, the jaguar is the largest, most powerful feline in the Americas, once common across the continent. Now mainly confined to the Amazon rainforest and the Pantanal tropical wetland, this solitary predator was heavily hunted for its striking coat in the 1960s and 70s. Its near-threatened status reflects a big decline in numbers from slash and burn practices to clear forests, and conflicts with farmers and hunters. Despite legislation, illegal trade for their bones, skin and meat is still a threat to their survival.

January 2025	
1	Wed <small>New Year's Day</small>
2	Thu <small>Bank Holiday (Scotland)</small>
3	Fri
4	Sat
5	Sun
6	Mon <small>Wk 2</small>
7	Tue
8	Wed
9	Thu
10	Fri
11	Sat
12	Sun
13	Mon <small>Wk 3</small>
14	Tue
15	Wed
16	Thu
17	Fri
18	Sat
19	Sun
20	Mon <small>Wk 4</small>
21	Tue
22	Wed
23	Thu
24	Fri
25	Sat
26	Sun
27	Mon <small>Wk 5</small>
28	Tue
29	Wed
30	Thu
31	Fri

January 2025

wk	Mon	Tue	Wed	Thu	Fri	Sat	Sun
1			1	2	3	4	5
2	6	7	8	9	10	11	12
3	13	14	15	16	17	18	19
4	20	21	22	23	24	25	26
5	27	28	29	30	31		

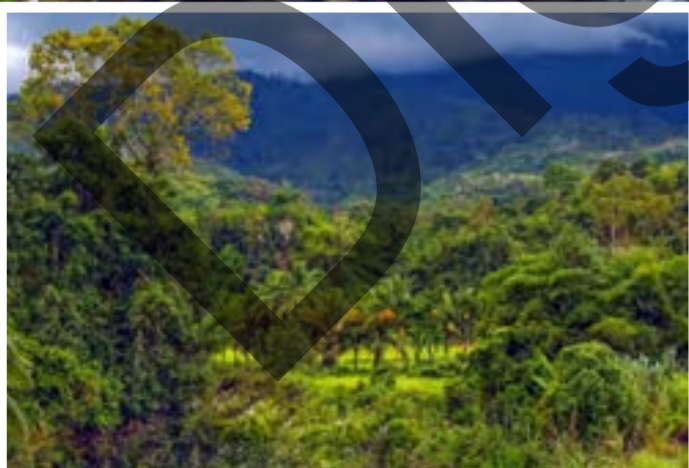
December 2024

Mon	Tue	Wed	Thu	Fri	Sat	Sun
						1
2	3	4	5	6	7	8
9	10	11	12	13	14	15
16	17	18	19	20	21	22
23 ^{/30}	24 ^{/31}	25	26	27	28	29

February

Mon	Tue	Wed	Thu	Fri	Sat	Sun
					1	2
3	4	5	6	7	8	9
10	11	12	13	14	15	16
17	18	19	20	21	22	23
24	25	26	27	28		

Endangered
SPECIES



**ORANGUTAN
SUMATRA, INDONESIA**

These highly intelligent, fruit-eating primates live a mostly solitary existence in lowland forests, swinging between branches with their long, powerful arms. The islands of Borneo and Sumatra are their last remaining refuge. The Sumatran orangutan is critically endangered, primarily through human activity, as loggers exploit the lowland forests they inhabit, chopping down and burning trees for timber, or to make way for cultivation, roads and housing. Being large and slow, they are also an easy target for the illegal bushmeat and pet trade.

February 2025	
1	Sat
2	Sun
3	Mon <small>Bank Holiday (Eire) Wk 6</small>
4	Tue
5	Wed
6	Thu
7	Fri
8	Sat
9	Sun
10	Mon <small>Wk 7</small>
11	Tue
12	Wed
13	Thu
14	Fri
15	Sat
16	Sun
17	Mon <small>Wk 8</small>
18	Tue
19	Wed
20	Thu
21	Fri
22	Sat
23	Sun
24	Mon <small>Wk 9</small>
25	Tue
26	Wed
27	Thu
28	Fri

February 2025

wk	Mon	Tue	Wed	Thu	Fri	Sat	Sun
5						1	2
6	3	4	5	6	7	8	9
7	10	11	12	13	14	15	16
8	17	18	19	20	21	22	23
9	24	25	26	27	28		

January

Mon	Tue	Wed	Thu	Fri	Sat	Sun
		1	2	3	4	5
6	7	8	9	10	11	12
13	14	15	16	17	18	19
20	21	22	23	24	25	26
27	28	29	30	31		

March

Mon	Tue	Wed	Thu	Fri	Sat	Sun
31					1	2
3	4	5	6	7	8	9
10	11	12	13	14	15	16
17	18	19	20	21	22	23
24	25	26	27	28	29	30

Endangered SPECIES



AFRICAN FOREST ELEPHANT
CONGO BASIN, CENTRAL AFRICA

African forest elephants inhabit dense forests in west and central Africa, in family groups of up to 20 individuals. Foraging on leaves, grasses, seeds, fruit and tree bark, they play a vital role in dispersing many tree species. They are smaller and more elusive than African savanna elephants and have a slower reproduction rate. Their critically endangered status is due to commercial development, agriculture and transportation, as well as climate change, drought and civil unrest. They are illegally poached for their tusks, despite bans on ivory trade.

March 2025	
1 Sat	St David's Day (Wales)
2 Sun	
3 Mon	Wk 10
4 Tue	
5 Wed	
6 Thu	
7 Fri	
8 Sat	
9 Sun	
10 Mon	Wk 11
11 Tue	
12 Wed	
13 Thu	
14 Fri	
15 Sat	
16 Sun	
17 Mon	St Patrick's Day (BH N Ireland/Eire) Wk 12
18 Tue	
19 Wed	
20 Thu	
21 Fri	
22 Sat	
23 Sun	
24 Mon	Wk 13
25 Tue	
26 Wed	
27 Thu	
28 Fri	
29 Sat	
30 Sun	British Summertime starts
31 Mon	Wk 14

March 2025

wk	Mon	Tue	Wed	Thu	Fri	Sat	Sun
	31					1	2
10	3	4	5	6	7	8	9
11	10	11	12	13	14	15	16
12	17	18	19	20	21	22	23
13	24	25	26	27	28	29	30

February

Mon	Tue	Wed	Thu	Fri	Sat	Sun
					1	2
3	4	5	6	7	8	9
10	11	12	13	14	15	16
17	18	19	20	21	22	23
24	25	26	27	28		

April

Mon	Tue	Wed	Thu	Fri	Sat	Sun
	1	2	3	4	5	6
7	8	9	10	11	12	13
14	15	16	17	18	19	20
21	22	23	24	25	26	27
28	29	30				

Endangered SPECIES



**GIANT PANDA
SICHUAN, CHINA**

Usually solitary, with a placid nature, giant pandas live in isolated populations, in temperate mountain rainforests in south and central China with dense bamboo coverage. Their inefficient digestion means they need to consume a huge amount of bamboo to survive. They play a crucial role by spreading seeds and helping new growth, but forest fragmentation and clearance for road and rail building has reduced their access to bamboo. Their status has recently been upgraded to vulnerable through conservation programmes and the establishment of reserves.

April 2025	
1	Tue
2	Wed
3	Thu
4	Fri
5	Sat
6	Sun
7	Mon
8	Tue
9	Wed
10	Thu
11	Fri
12	Sat
13	Sun
14	Mon
15	Tue
16	Wed
17	Thu
18	Fri
19	Sat
20	Sun
21	Mon
22	Tue
23	Wed
24	Thu
25	Fri
26	Sat
27	Sun
28	Mon
29	Tue
30	Wed

April 2025

wk	Mon	Tue	Wed	Thu	Fri	Sat	Sun
14		1	2	3	4	5	6
15	7	8	9	10	11	12	13
16	14	15	16	17	18	19	20
17	21	22	23	24	25	26	27
18	28	29	30				

March

Mon	Tue	Wed	Thu	Fri	Sat	Sun
31					1	2
3	4	5	6	7	8	9
10	11	12	13	14	15	16
17	18	19	20	21	22	23
24	25	26	27	28	29	30

May

Mon	Tue	Wed	Thu	Fri	Sat	Sun
			1	2	3	4
5	6	7	8	9	10	11
12	13	14	15	16	17	18
19	20	21	22	23	24	25
26	27	28	29	30	31	

**Endangered
SPECIES**



BLUE WHALE
MAMANUCA ISLANDS, FIJI

The largest animal on the planet has an extremely loud call and a low-frequency whistle that can be heard for hundreds of miles, probably used to attract other blue whales. Generally, populations migrate between their summer feeding areas near the poles and the winter breeding grounds near the tropics. Blue whales are classed as endangered, mainly as they can be harmed by ship strikes and getting entangled in fishing gear. Climate change and its impact on krill, their main food source, is another threat, as well as pollution and habitat degradation.

May 2025

1	Thu	
2	Fri	
3	Sat	
4	Sun	
5	Mon	Bank Holiday Wk 19
6	Tue	
7	Wed	
8	Thu	
9	Fri	
10	Sat	
11	Sun	
12	Mon	Wk 20
13	Tue	
14	Wed	
15	Thu	
16	Fri	
17	Sat	
18	Sun	
19	Mon	Wk 21
20	Tue	
21	Wed	
22	Thu	
23	Fri	
24	Sat	
25	Sun	
26	Mon	Bank Holiday Wk 22
27	Tue	
28	Wed	
29	Thu	
30	Fri	
31	Sat	

May 2025

wk	Mon	Tue	Wed	Thu	Fri	Sat	Sun
18				1	2	3	4
19	5	6	7	8	9	10	11
20	12	13	14	15	16	17	18
21	19	20	21	22	23	24	25
22	26	27	28	29	30	31	

April

Mon	Tue	Wed	Thu	Fri	Sat	Sun
	1	2	3	4	5	6
7	8	9	10	11	12	13
14	15	16	17	18	19	20
21	22	23	24	25	26	27
28	29	30				

June

Mon	Tue	Wed	Thu	Fri	Sat	Sun
30						1
2	3	4	5	6	7	8
9	10	11	12	13	14	15
16	17	18	19	20	21	22
23	24	25	26	27	28	29

Endangered SPECIES



**BENGAL TIGER
INDIA**

These magnificent cats lead solitary lives, apart from a mother and her cubs, only meeting up occasionally with other tigers. They love bathing in water to cool off and are excellent swimmers. Tigers can be found in isolated forests, woodlands, and grasslands and mangrove swamps. They use the stalk and ambush method to catch their prey by stealth. Despite the creation of tiger reserves in the 1970s, they are endangered by a constant threat of illegal poaching, habitat fragmentation and encroachment of human populations, which brings a loss of prey.

June 2025	
1	Sun
2	Mon
3	Tue
4	Wed
5	Thu
6	Fri
7	Sat
8	Sun
9	Mon
10	Tue
11	Wed
12	Thu
13	Fri
14	Sat
15	Sun
16	Mon
17	Tue
18	Wed
19	Thu
20	Fri
21	Sat
22	Sun
23	Mon
24	Tue
25	Wed
26	Thu
27	Fri
28	Sat
29	Sun
30	Mon

June 2025

wk	Mon	Tue	Wed	Thu	Fri	Sat	Sun
	30						1
23	2	3	4	5	6	7	8
24	9	10	11	12	13	14	15
25	16	17	18	19	20	21	22
26	23	24	25	26	27	28	29

May

Mon	Tue	Wed	Thu	Fri	Sat	Sun
			1	2	3	4
5	6	7	8	9	10	11
12	13	14	15	16	17	18
19	20	21	22	23	24	25
26	27	28	29	30	31	

July

Mon	Tue	Wed	Thu	Fri	Sat	Sun
	1	2	3	4	5	6
7	8	9	10	11	12	13
14	15	16	17	18	19	20
21	22	23	24	25	26	27
28	29	30	31			

Endangered SPECIES



July 2025

1	Tue	
2	Wed	
3	Thu	
4	Fri	
5	Sat	
6	Sun	
7	Mon	Wk 28
8	Tue	
9	Wed	
10	Thu	
11	Fri	
12	Sat	
13	Sun	
14	Mon	Bank Holiday (N Ireland) Wk 29
15	Tue	
16	Wed	
17	Thu	
18	Fri	
19	Sat	
20	Sun	
21	Mon	Wk 30
22	Tue	
23	Wed	
24	Thu	
25	Fri	
26	Sat	
27	Sun	
28	Mon	Wk 31
29	Tue	
30	Wed	
31	Thu	

July 2025

wk	Mon	Tue	Wed	Thu	Fri	Sat	Sun
27		1	2	3	4	5	6
28	7	8	9	10	11	12	13
29	14	15	16	17	18	19	20
30	21	22	23	24	25	26	27
31	28	29	30	31			

June

Mon	Tue	Wed	Thu	Fri	Sat	Sun
30						1
2	3	4	5	6	7	8
9	10	11	12	13	14	15
16	17	18	19	20	21	22
23	24	25	26	27	28	29

August

Mon	Tue	Wed	Thu	Fri	Sat	Sun
				1	2	3
4	5	6	7	8	9	10
11	12	13	14	15	16	17
18	19	20	21	22	23	24
25	26	27	28	29	30	31

CALIFORNIA CONDOR PINNACLES NP, CALIFORNIA, USA

The California condor is North America's largest land bird, inhabiting forests, scrubland and savanna. It has black plumage with white underwing triangles and a bald orange head. Its 3m wingspan allows it to soar over a wide range from coast to sierras, in search of dead carcasses.

It became extinct in the wild in 1987, but after an intensive captivity and conservation project it was reintroduced in the wild. It is listed as critically endangered due to threats such as lead poisoning from spent ammunition, habitat loss and collision with power lines.

**Endangered
SPECIES**



RETICULATED GIRAFFE
KENYA

This is one of nine subspecies of giraffe, with rich orange-brown patches clearly defined by a network of striking white lines, which continue the entire length of the legs. They live in loose scattered mixed herds, where each member knows its status in the hierarchy which is maintained by 'necking' contests between the males. They are listed as endangered due to a drastic decline in population caused by illegal hunting for their meat and body parts, habitat loss and fragmentation, and competition for food and water from newly introduced livestock.

August 2025

1	Fri	
2	Sat	
3	Sun	
4	Mon	Bank Holiday (Scotland/Eire) Wk 32
5	Tue	
6	Wed	
7	Thu	
8	Fri	
9	Sat	
10	Sun	
11	Mon	Wk 33
12	Tue	
13	Wed	
14	Thu	
15	Fri	
16	Sat	
17	Sun	
18	Mon	Wk 34
19	Tue	
20	Wed	
21	Thu	
22	Fri	
23	Sat	
24	Sun	
25	Mon	Bank Holiday (excl Scotland) Wk 35
26	Tue	
27	Wed	
28	Thu	
29	Fri	
30	Sat	
31	Sun	

August 2025

wk	Mon	Tue	Wed	Thu	Fri	Sat	Sun
31					1	2	3
32	4	5	6	7	8	9	10
33	11	12	13	14	15	16	17
34	18	19	20	21	22	23	24
35	25	26	27	28	29	30	31

July

Mon	Tue	Wed	Thu	Fri	Sat	Sun
	1	2	3	4	5	6
7	8	9	10	11	12	13
14	15	16	17	18	19	20
21	22	23	24	25	26	27
28	29	30	31			

September

Mon	Tue	Wed	Thu	Fri	Sat	Sun
1	2	3	4	5	6	7
8	9	10	11	12	13	14
15	16	17	18	19	20	21
22	23	24	25	26	27	28
29	30					

Endangered SPECIES



YELLOW-EYED PENGUIN
OTAGO, NEW ZEALAND

This is the rarest species of penguin, with yellow eyes and eye stripes. With a tiny range, confined to the South Island of New Zealand and outlying islands, they are classified as endangered. Unlike other penguins, they are solitary, returning to nests in burrows after a day's fishing at sea, nesting among coastal vegetation and dunes. Their main threat is competition with humans for living space, as their scrub habitat, needed to build safe nesting sites, gets converted to grazing pastures; also attacks on their chicks from ferrets, dogs and cats.

September 2025

1	Mon	Wk 36
2	Tue	
3	Wed	
4	Thu	
5	Fri	
6	Sat	
7	Sun	
8	Mon	Wk 37
9	Tue	
10	Wed	
11	Thu	
12	Fri	
13	Sat	
14	Sun	
15	Mon	Wk 38
16	Tue	
17	Wed	
18	Thu	
19	Fri	
20	Sat	
21	Sun	
22	Mon	Wk 39
23	Tue	
24	Wed	
25	Thu	
26	Fri	
27	Sat	
28	Sun	
29	Mon	Wk 40
30	Tue	

September 2025

wk	Mon	Tue	Wed	Thu	Fri	Sat	Sun
36	1	2	3	4	5	6	7
37	8	9	10	11	12	13	14
38	15	16	17	18	19	20	21
39	22	23	24	25	26	27	28
40	29	30					

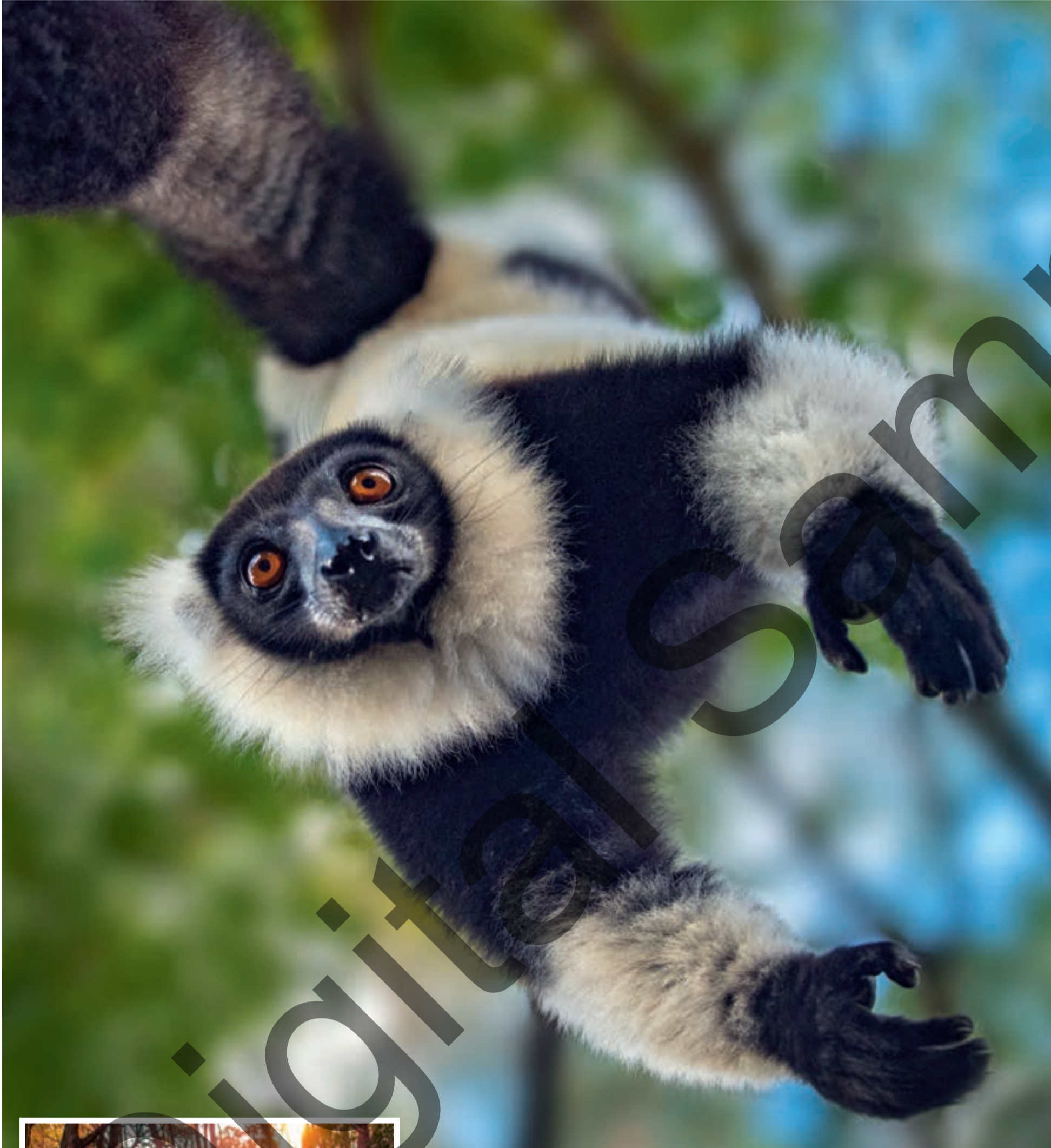
August

Mon	Tue	Wed	Thu	Fri	Sat	Sun
				1	2	3
4	5	6	7	8	9	10
11	12	13	14	15	16	17
18	19	20	21	22	23	24
25	26	27	28	29	30	31

October

Mon	Tue	Wed	Thu	Fri	Sat	Sun
		1	2	3	4	5
6	7	8	9	10	11	12
13	14	15	16	17	18	19
20	21	22	23	24	25	26
27	28	29	30	31		

Endangered SPECIES



**BLACK AND WHITE RUFFED LEMUR
MADAGASCAR**

One of the biggest lemur species, endemic to Madagascar, the black and white ruffed lemur has a ruff of fur round the neck. It is an agile climber and is able to suspend from its feet to reach ripe fruit hanging from tree branches. Living in family groups where females are dominant, they communicate by growls, barks and howls. Classed as critically endangered, the principal threat to their survival comes from humans. They are hunted as bushmeat by poachers, and agricultural practices like the slash and burn method have devastated their natural habitat.

October 2025	
1	Wed
2	Thu
3	Fri
4	Sat
5	Sun
6	Mon Wk 41
7	Tue
8	Wed
9	Thu
10	Fri
11	Sat
12	Sun
13	Mon Wk 42
14	Tue
15	Wed
16	Thu
17	Fri
18	Sat
19	Sun
20	Mon Wk 43
21	Tue
22	Wed
23	Thu
24	Fri
25	Sat
26	Sun British Summertime ends
27	Mon Bank Holiday (Eire) Wk 44
28	Tue
29	Wed
30	Thu
31	Fri

October 2025

wk	Mon	Tue	Wed	Thu	Fri	Sat	Sun
40			1	2	3	4	5
41	6	7	8	9	10	11	12
42	13	14	15	16	17	18	19
43	20	21	22	23	24	25	26
44	27	28	29	30	31		

September

Mon	Tue	Wed	Thu	Fri	Sat	Sun
1	2	3	4	5	6	7
8	9	10	11	12	13	14
15	16	17	18	19	20	21
22	23	24	25	26	27	28
29	30					

November

Mon	Tue	Wed	Thu	Fri	Sat	Sun
					1	2
3	4	5	6	7	8	9
10	11	12	13	14	15	16
17	18	19	20	21	22	23
24	25	26	27	28	29	30

**Endangered
SPECIES**



**HAWAIIAN MONK SEAL
KAUAI, HAWAII**

The only seal native to Hawaii, it's name comes from the thick fold of skin around the neck that resembles the hood of a monk's robe. Living a solitary lifestyle, unlike other seals that live in colonies, they forage for fish, squid, crustaceans and eels, and can dive down to depths of 300m. Hunted commercially in the past for their skins, the existing population is threatened by human encroachment, very low levels of genetic variation, entanglement in fishing nets, marine debris, overfishing and disease, and they are classified as endangered.

November 2025	
1	Sat
2	Sun
3	Mon Wk 45
4	Tue
5	Wed
6	Thu
7	Fri
8	Sat
9	Sun
10	Mon Wk 46
11	Tue
12	Wed
13	Thu
14	Fri
15	Sat
16	Sun
17	Mon Wk 47
18	Tue
19	Wed
20	Thu
21	Fri
22	Sat
23	Sun
24	Mon Wk 48
25	Tue
26	Wed
27	Thu
28	Fri
29	Sat
30	Sun St Andrew's Day (Scotland)

November 2025

wk	Mon	Tue	Wed	Thu	Fri	Sat	Sun
44						1	2
45	3	4	5	6	7	8	9
46	10	11	12	13	14	15	16
47	17	18	19	20	21	22	23
48	24	25	26	27	28	29	30

October

Mon	Tue	Wed	Thu	Fri	Sat	Sun
		1	2	3	4	5
6	7	8	9	10	11	12
13	14	15	16	17	18	19
20	21	22	23	24	25	26
27	28	29	30	31		

December

Mon	Tue	Wed	Thu	Fri	Sat	Sun
1	2	3	4	5	6	7
8	9	10	11	12	13	14
15	16	17	18	19	20	21
22	23	24	25	26	27	28
29	30	31				

**Endangered
SPECIES**



POLAR BEAR
NORTH BAFFIN ISLAND, CANADA

Generally solitary and superbly adapted to life on the Arctic ice floes, with large, furry, partially webbed paws to help them walk on the ice and swim, polar bears depend on sea ice to hunt seals, their staple diet. While they have no predators, they are classified as vulnerable because of global warming. As the Arctic ice cap melts, and the sea ice decreases, they must travel long distances to find food for themselves and their cubs to survive, so spend more time on land. Other hazards include chemical pollutants in their food chain.

December 2025	
1	Mon Wk 49
2	Tue
3	Wed
4	Thu
5	Fri
6	Sat
7	Sun
8	Mon Wk 50
9	Tue
10	Wed
11	Thu
12	Fri
13	Sat
14	Sun
15	Mon Wk 51
16	Tue
17	Wed
18	Thu
19	Fri
20	Sat
21	Sun Shortest Day
22	Mon Wk 52
23	Tue
24	Wed
25	Thu Christmas Day
26	Fri Boxing Day
27	Sat
28	Sun
29	Mon Wk 1
30	Tue
31	Wed

December 2025

wk	Mon	Tue	Wed	Thu	Fri	Sat	Sun
49	1	2	3	4	5	6	7
50	8	9	10	11	12	13	14
51	15	16	17	18	19	20	21
52	22	23	24	25	26	27	28
1	29	30	31				

November

Mon	Tue	Wed	Thu	Fri	Sat	Sun
					1	2
3	4	5	6	7	8	9
10	11	12	13	14	15	16
17	18	19	20	21	22	23
24	25	26	27	28	29	30

January 2026

Mon	Tue	Wed	Thu	Fri	Sat	Sun
			1	2	3	4
5	6	7	8	9	10	11
12	13	14	15	16	17	18
19	20	21	22	23	24	25
26	27	28	29	30	31	

Endangered SPECIES